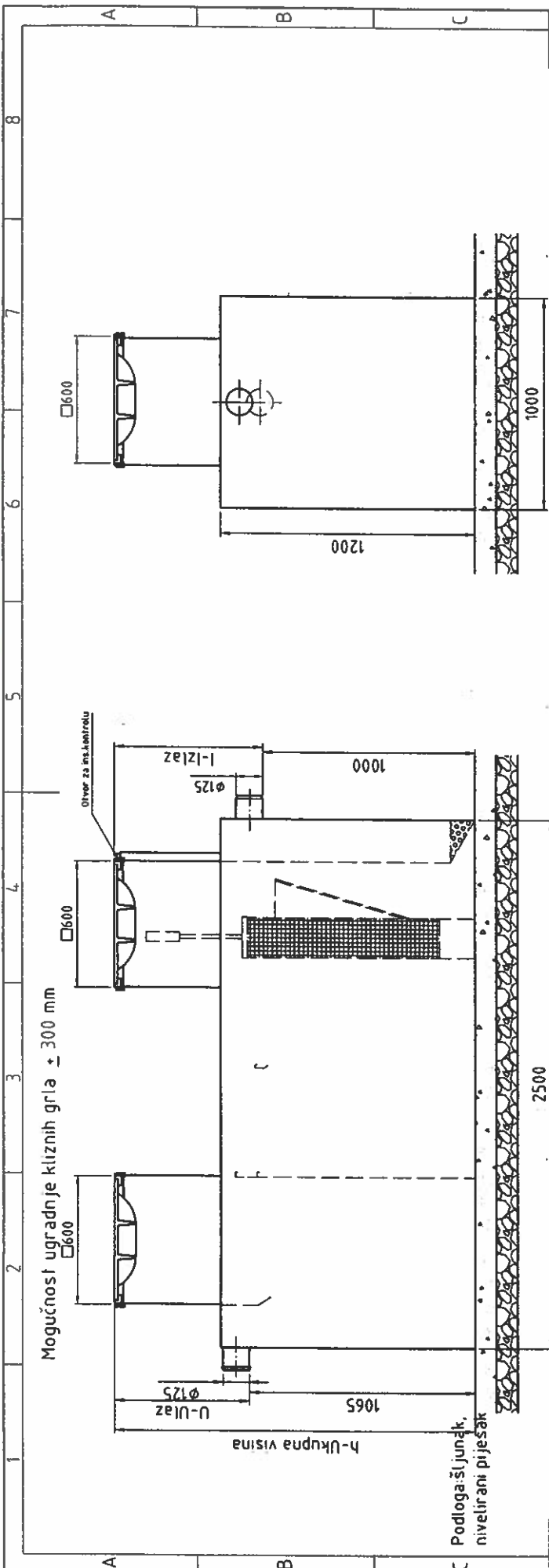
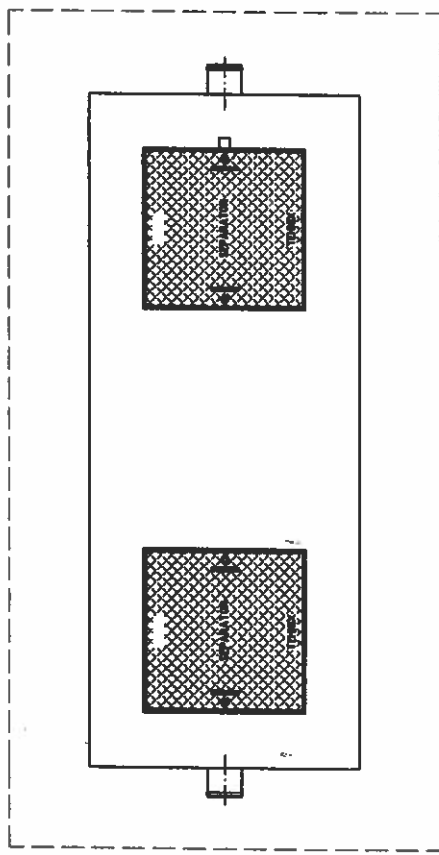


Separator od 'obloči za pranje v. v.



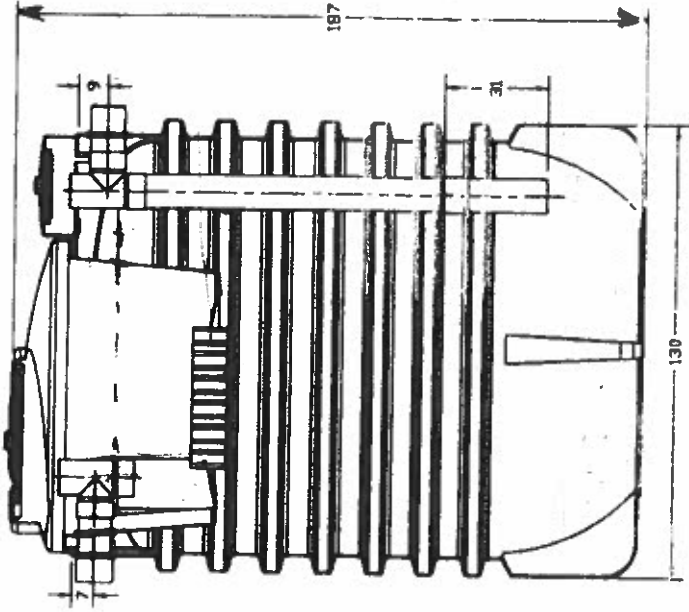
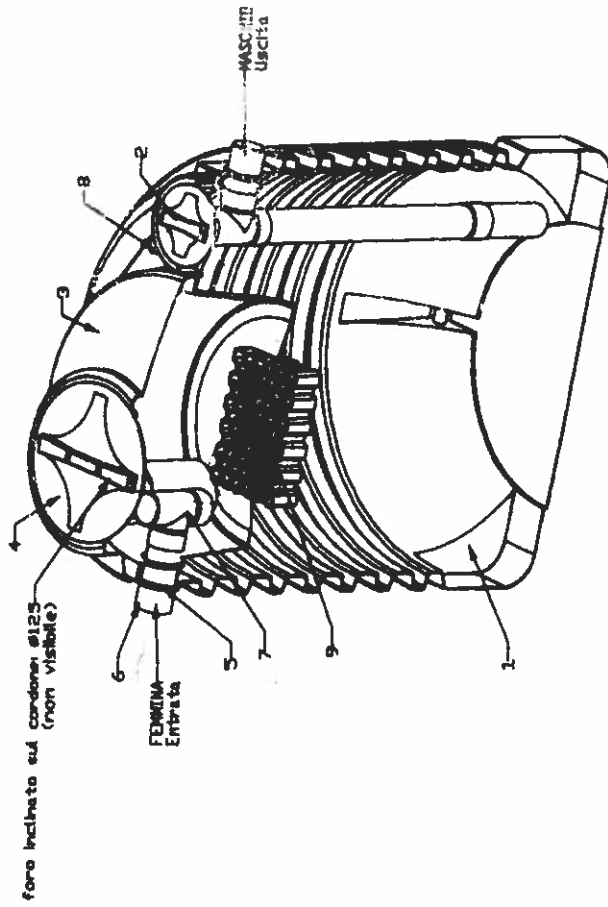
Volumen separatora: 2500 l
Protok separatora: 6 l/s
Cijevi: Ø125
Masa praznog separatora: 500 kg
Masa punog separatora 3000 kg

separatori spadaju u I. klasu separatora prema hrvatskoj normi HRN EN 858 što znači da je količina rezidualnog ulja manja od 5 mg/l



Površina		Njemačka	1:18	Norma	EN 858
Cijena		-C.0361			
Datum		line		Proizvod	
Kritič	Levica i desna strana			Separator 2500 l	
Prehvat	Prehvat D i lijeve strane			Q=6.0 lit/sec	
Bojnice	Prehvat D i desne strane				
Tehnliz		-TX-SEP2500-09-01		Page	
Datum		line		8	
Prilozi		Spremljeno TX-SEP2500-09-01		9	

Separator u Pegerau Knin

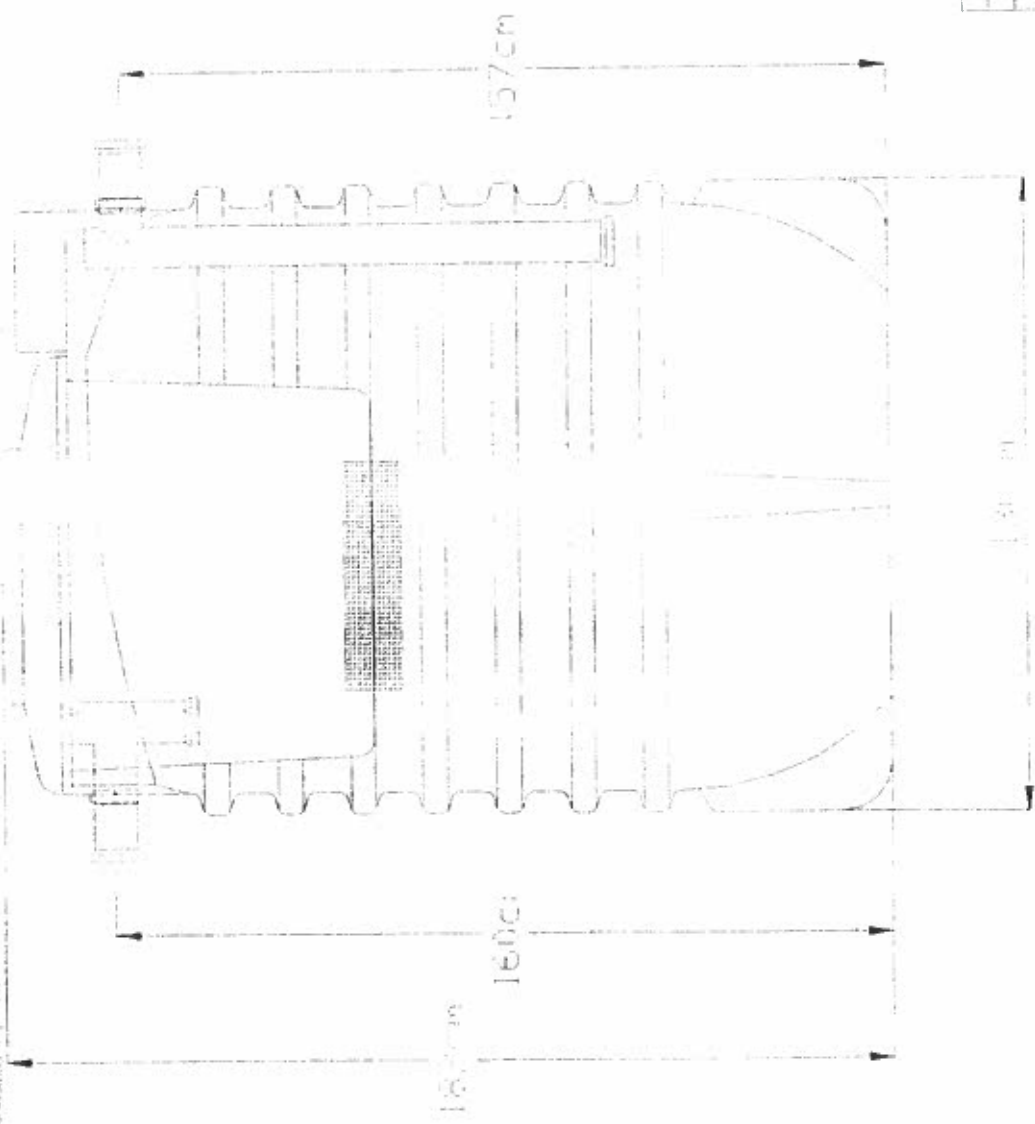


n°	Componente	C.f.a
1	Scocca Nervata It.2000	1
2	Coperchio D.255	1
3	Sedimentatore It.600	1
4	Coperchio D.455	1
5	Guarnizione D.100	3
6	Derivazione T D.100	2
7	Tubo PVC D.100	2
8	Tappo Scarico 5/4"	1
9	Pacco Lamellare	1
-	Adesivi (non visibili)	

SC080

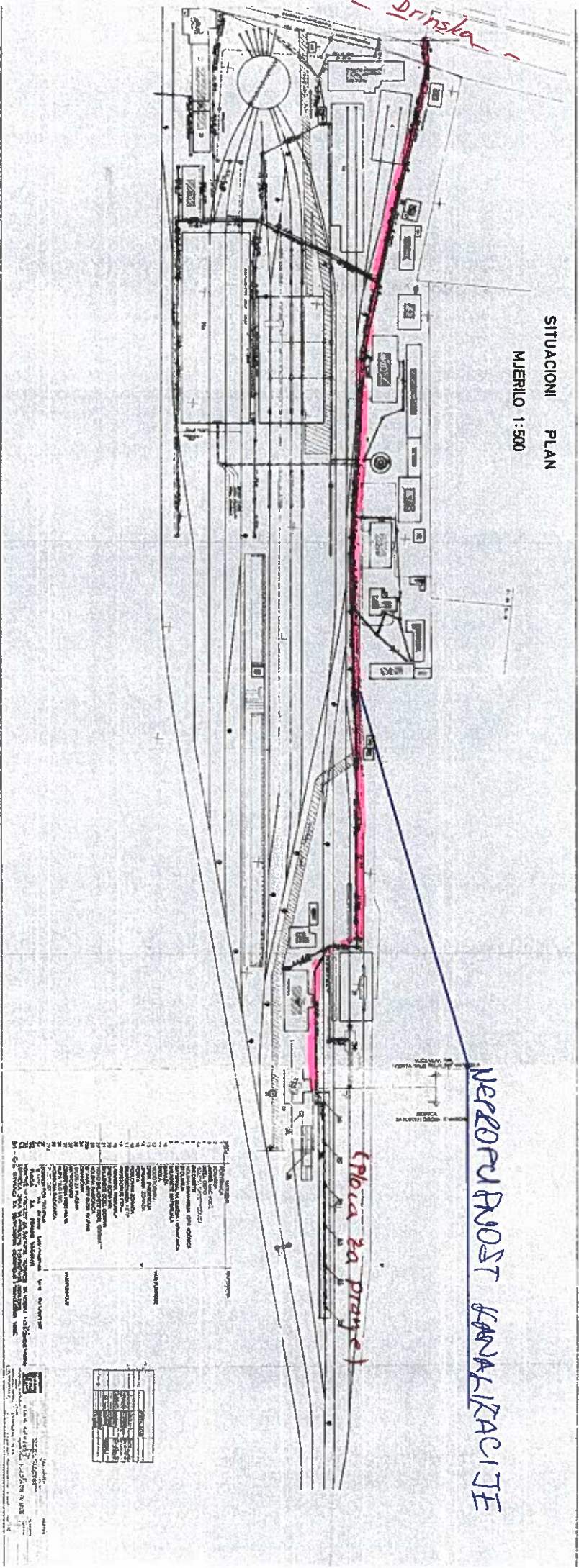
KNIN

Geometrisi proyek tersebut
Vol. tot. = 2000 lt
Vol. oli = 1200 lt
Superf = 1,327 m²



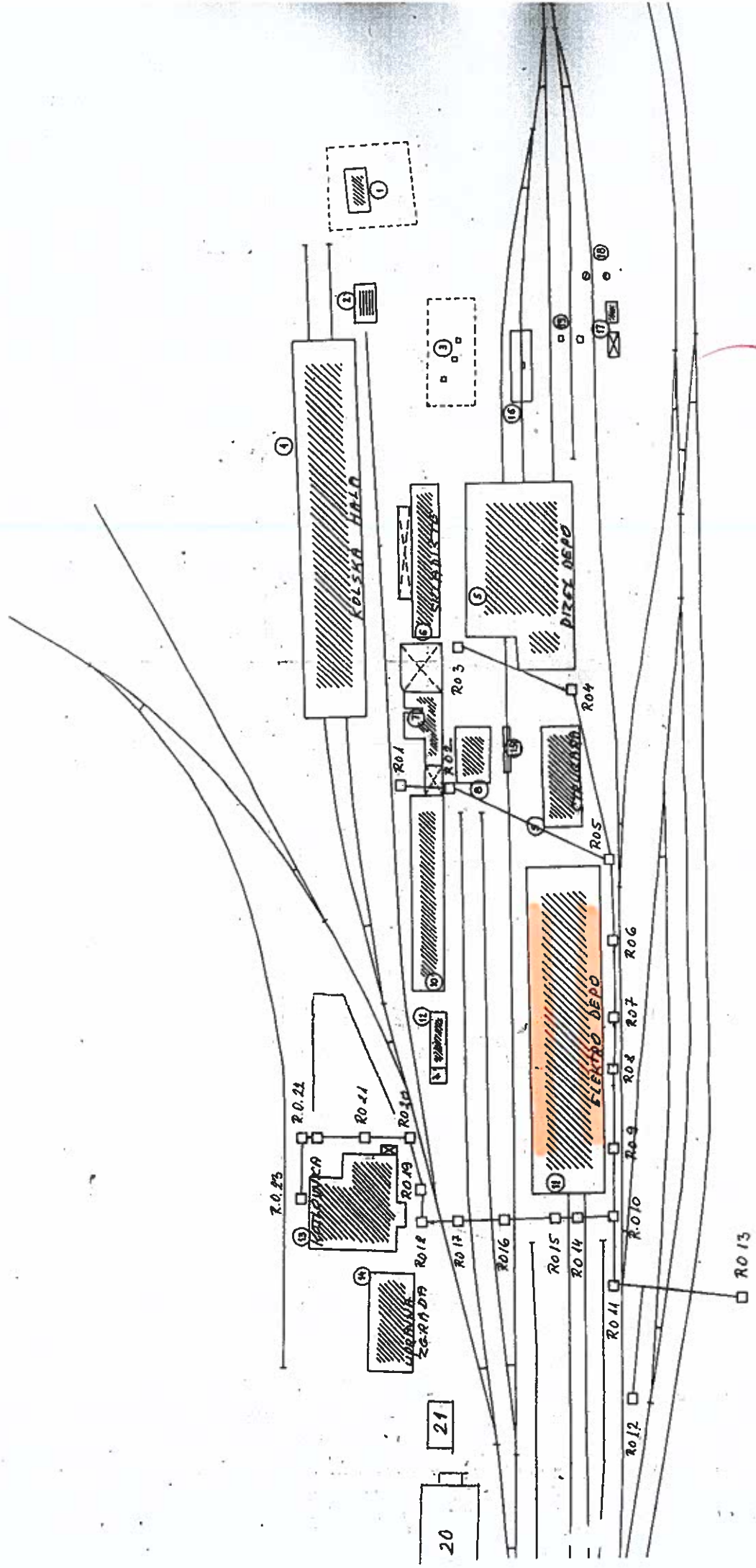
303080	303080	303080	303080	303080	303080	303080	303080
303080	303080	303080	303080	303080	303080	303080	303080
				Sep. Performance SC080		303080	

SITUACIONI PLAN
Mjerilo 1:500



NEPOPUKNOŠT SANJALIZACIJE

OSIJEK



SITUACIONI PLAN
 KOMPLEKSA SEKCIJE ZA VUČU-VINKOVCI
 Mjerilo 1:1000

SHEMA KANALIZACIJE
 PRILOG 4

(el. depo)



